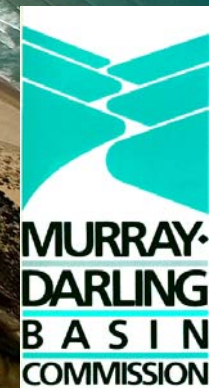


**First Minister's Briefing  
River Murray System  
Drought Operation and Planning  
2006-07 and Beyond**

7 November 2006

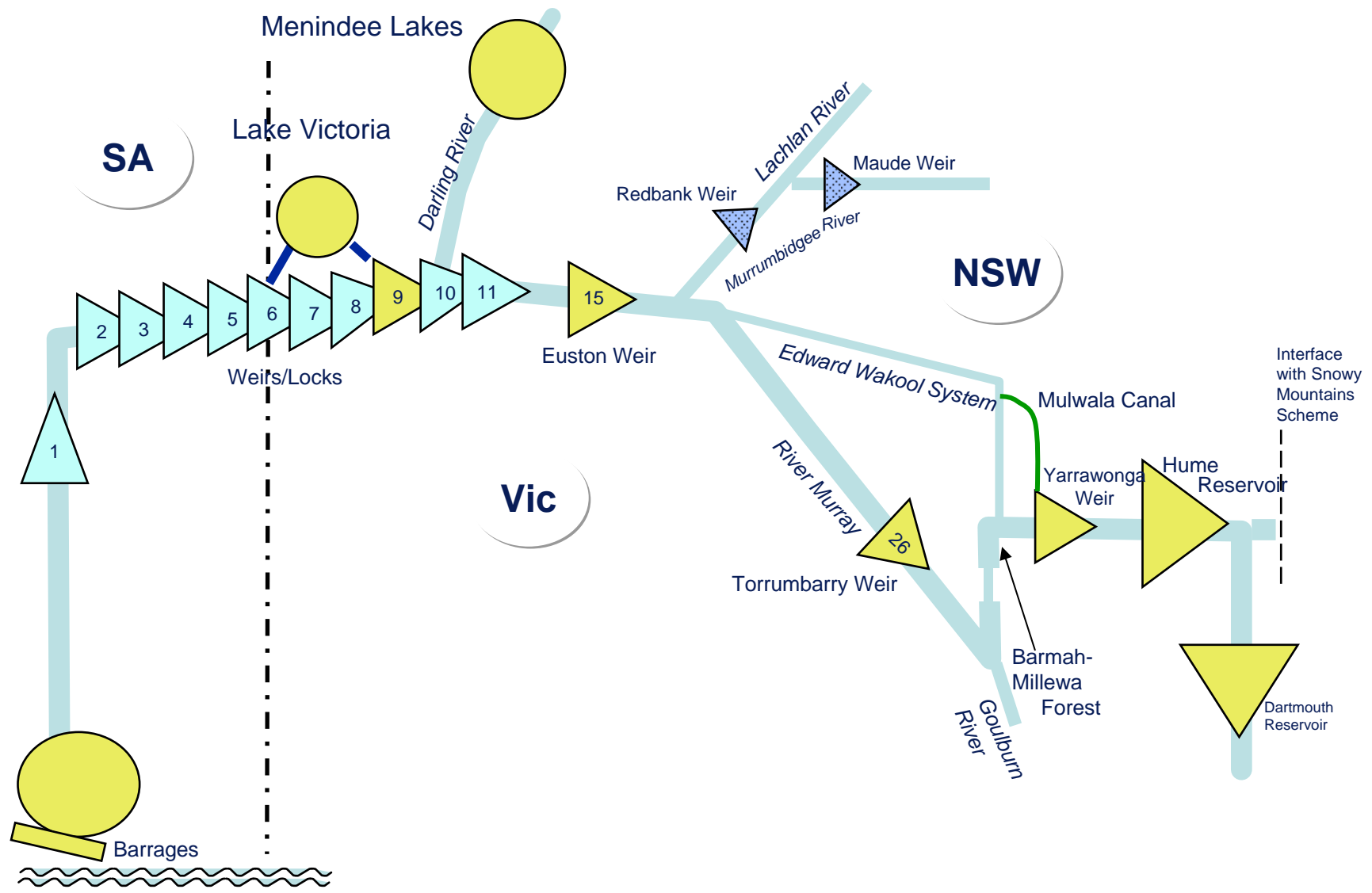
**David Dreverman**  
General Manager, River Murray Water  
Murray-Darling Basin Commission



# Introduction

- Current drought situation
- Current resource availability
- Outlook for remainder of season
- Outlook for 2007-08
- Operational planning for 2007-08, in event of continuing extreme dry

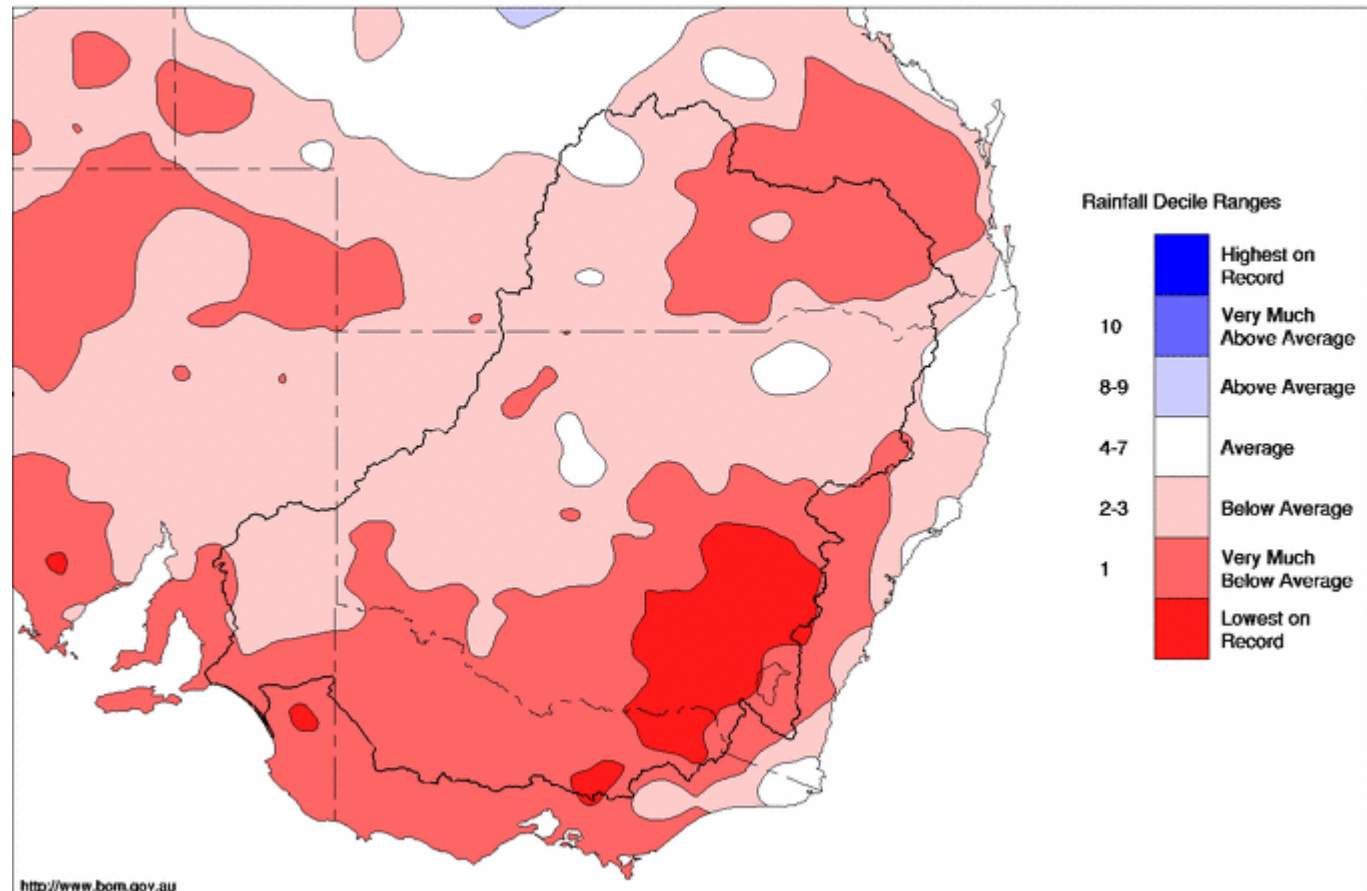
# Overview of the River Murray System



# Rainfall Deciles – 9 months February to October 2006

Murray Darling Rainfall Deciles 1 February to 31 October 2006

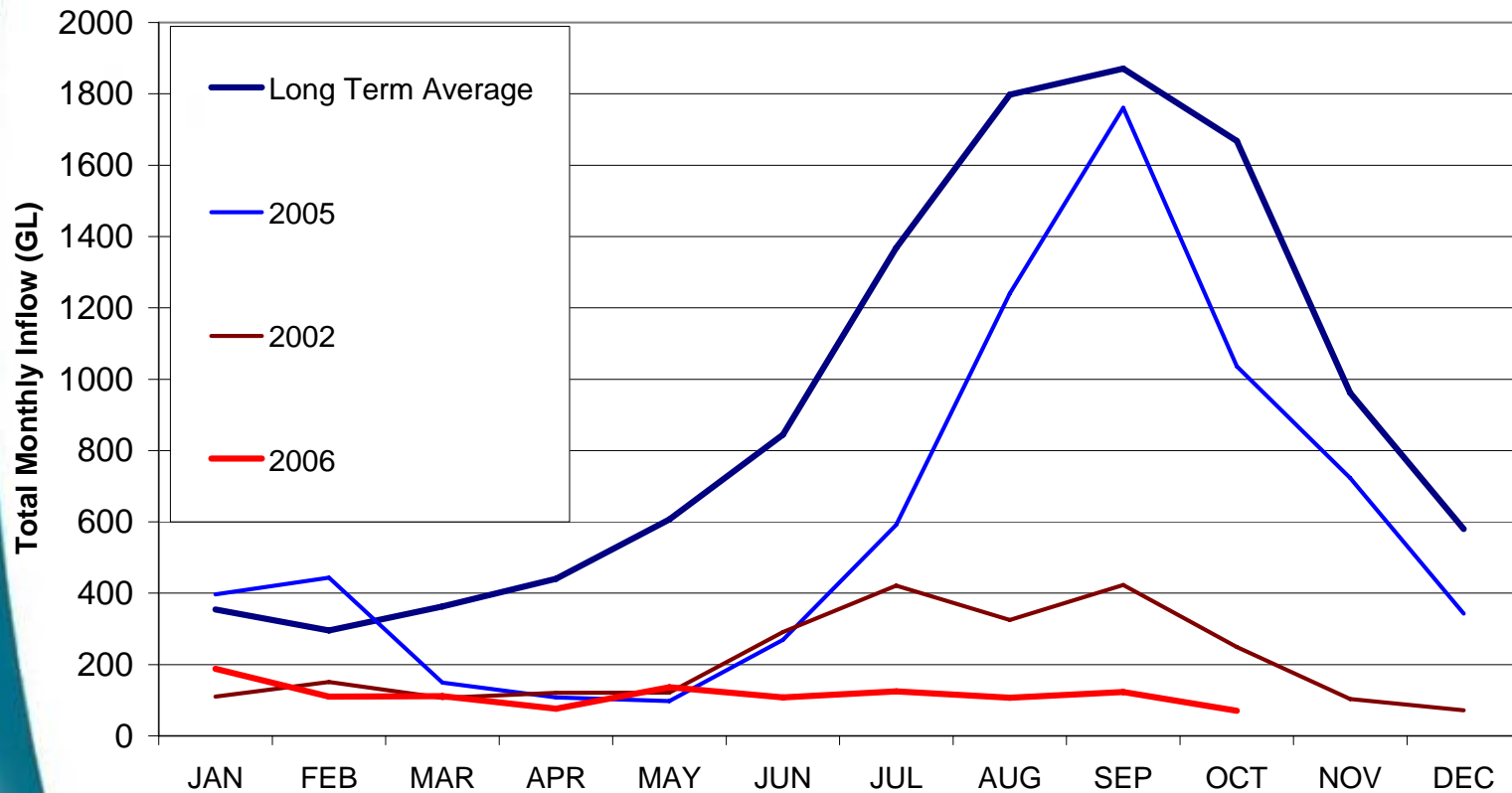
Distribution Based on Gridded Data  
Product of the National Climate Centre



# Inflows to the River Murray

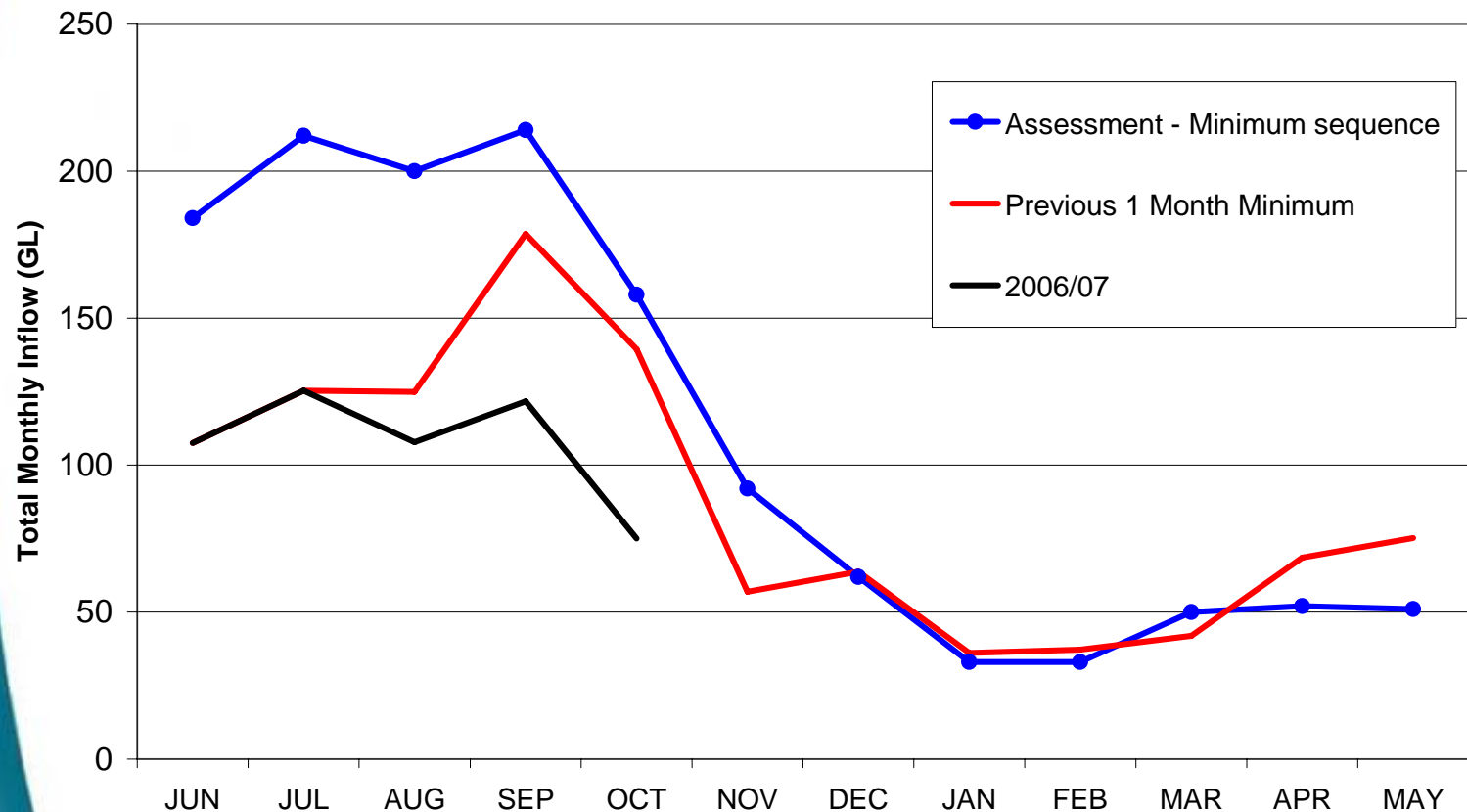
## Long Term Average and Selected Years

Inflows to the River Murray  
Selected Years -v- Long Term Average  
Modelled Current Conditions to June 2000, Actual Data from July 2000



# River Murray System Inflows Seasonal Update

River Murray System Inflows



# Current State Allocations

(As at 31 October 2006)

STATE	Allocation	Date Announced
<b>NSW</b>	0% General Security ~80% High Security (reduced by 20%)  ~80% of carryover (reduced by 20%)	15 Oct 2006
<b>Victoria</b>	95% Water Right  0% Sales	16 Oct 2006
<b>SA</b>	60% Licensed Entitlement (reduced by 20%)	2 Nov 2006



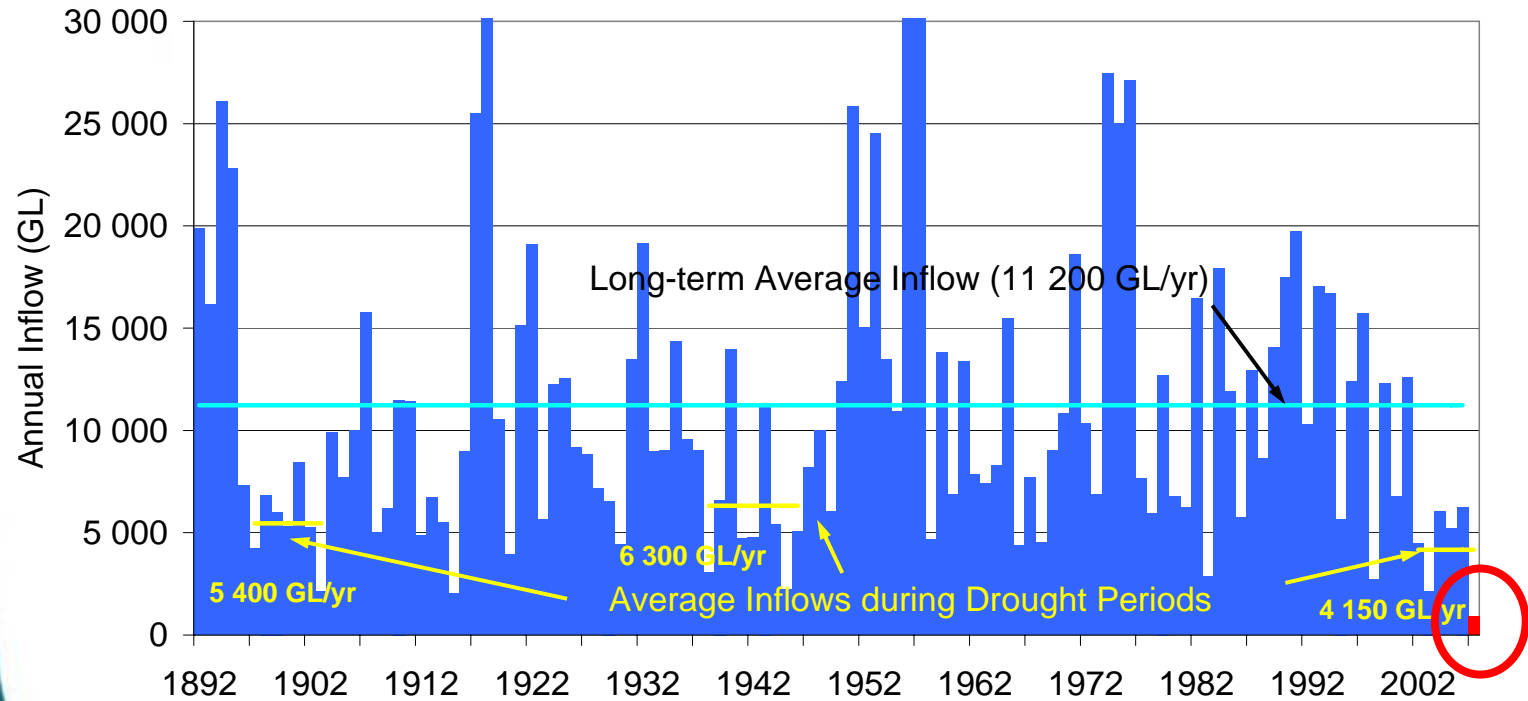
# Environmental watering program 2006-07

- 34.8 GL (~14 GL used)
- ~1% of consumptive water
- Barmah-Millewa EWA – 138 GL loaned
- < 1% of the area of icon sites will benefit
- Environment suffering from drought plus consumptive use
- Critical watering for small ecological refuges only

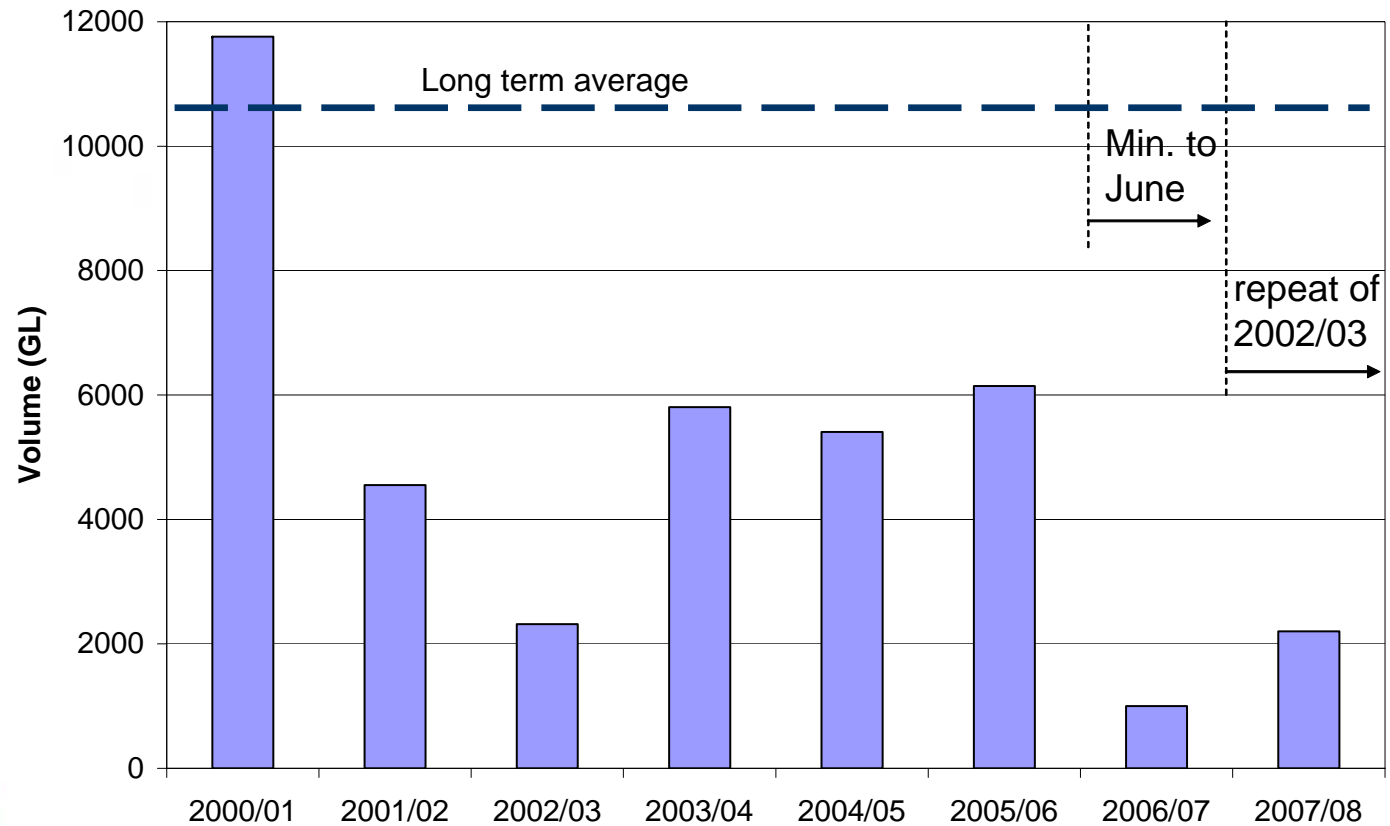


# River Murray System Inflows (including Darling) Annual Totals

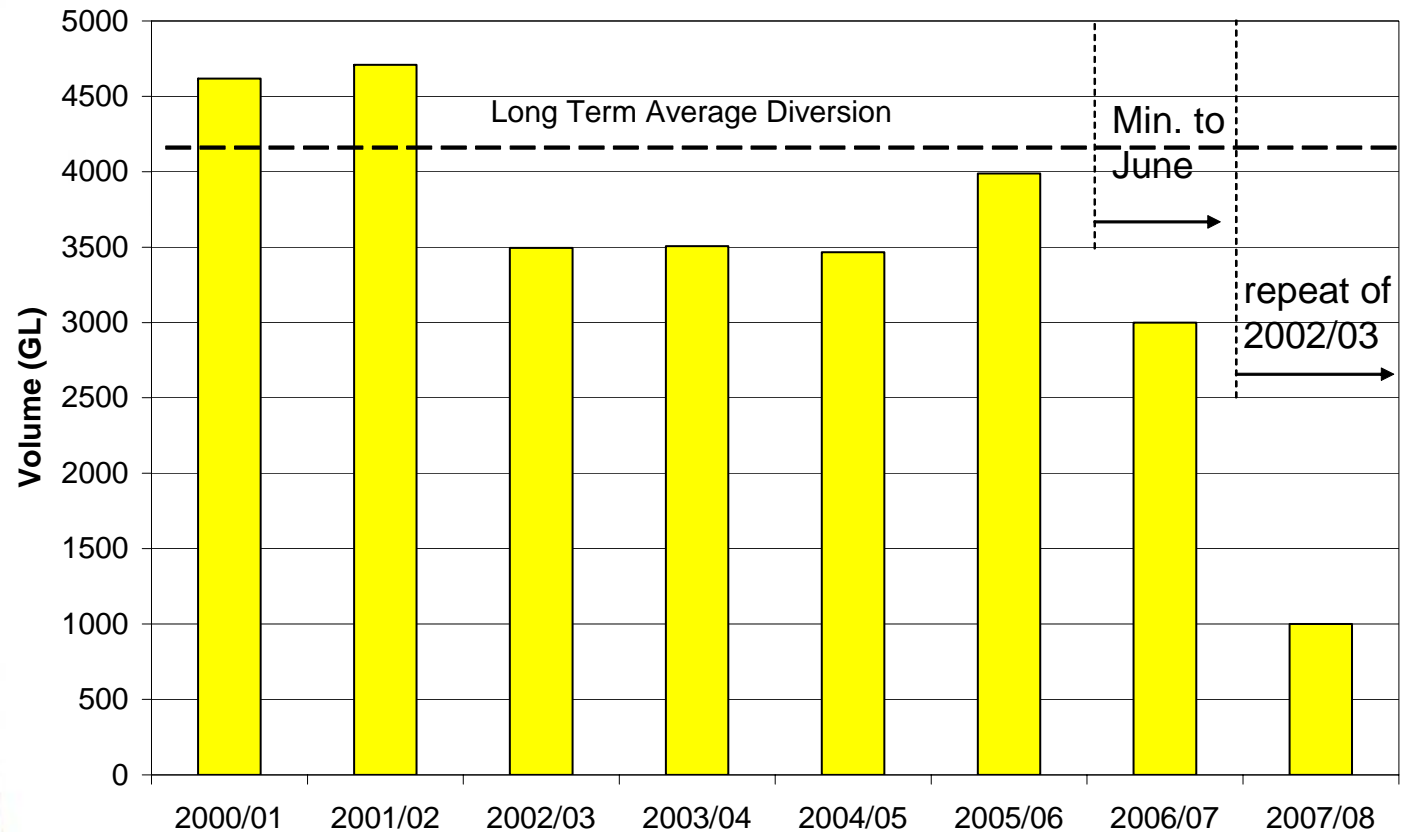
Total River Murray System Inflows (including Darling River)  
Modelled Annual Inflows - current conditions



# River Murray Inflows Outlook in extreme dry



# River Murray Diversions Outlook in extreme dry





# Operational Constraints 2006-07 examples

- Lake Hume close to minimum operating level by late January 2007
- From January 2007 restrictions likely due to levels in Lake Hume
- Snowy providing reduced release due to extreme dry
- Town water supplies higher security and reasonably assured (subject to any local restrictions)
- Total storage (Dartmouth, Hume and Lake Victoria effectively empty by end irrigation season in April 2007)
- Through winter town supplies met by inflows plus Snowy





# Operational Issues 2007-08

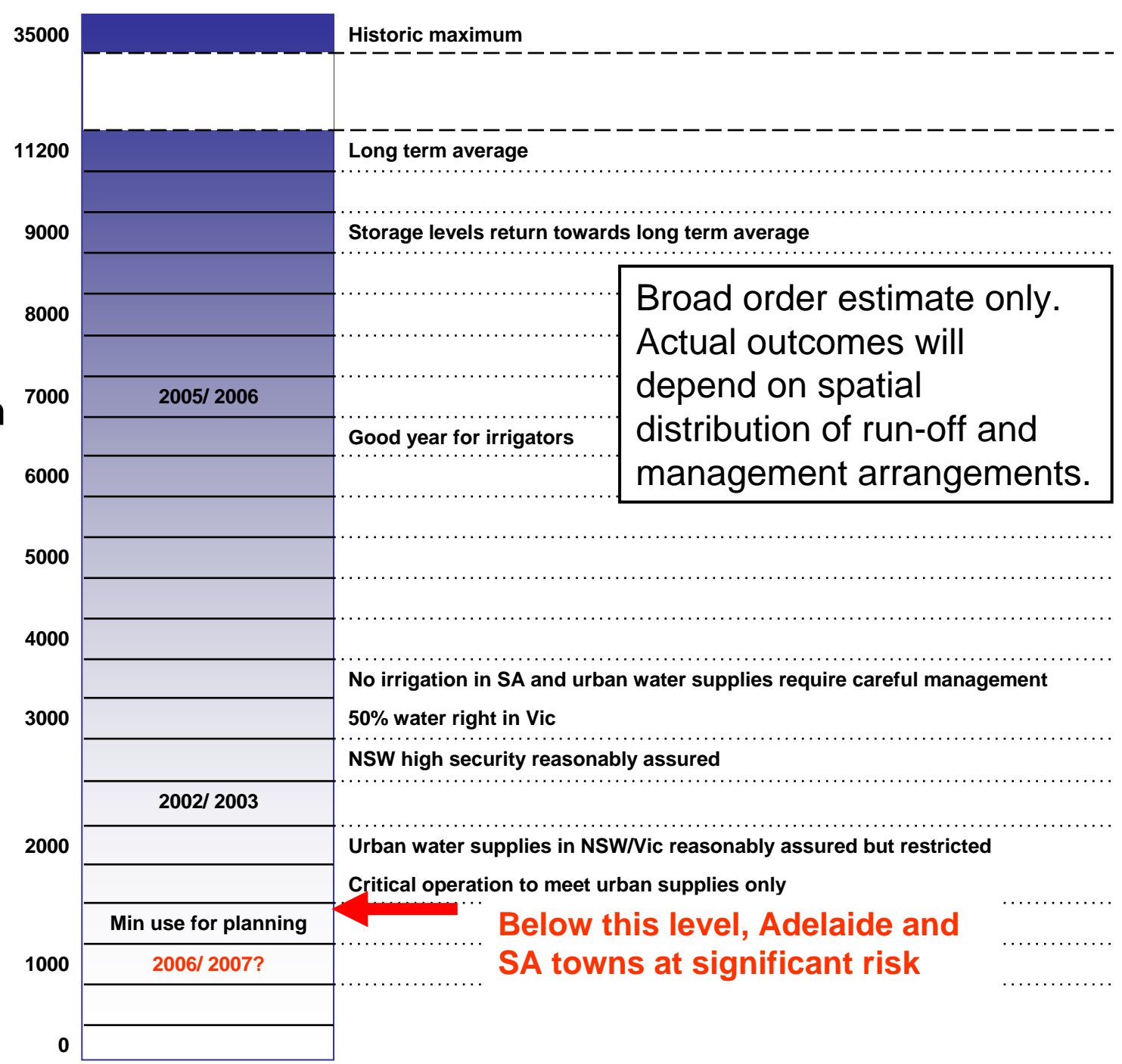
## If Extreme Dry Conditions continue

- New territory
- No two consecutive extreme dry years in 114 years of record
- First time without reserves
- May need to operate the river in new ways
- Priority is urban and domestic users



# Indicative 2007/08 scenarios

Murray system inflows (excluding Snowy)  
GL



Broad order estimate only. Actual outcomes will depend on spatial distribution of run-off and management arrangements.

**Below this level, Adelaide and SA towns at significant risk**

# Repeat of 2006/07 inflows

- Multiple measures needed to mitigate evaporation losses
  - Disconnect Lake Victoria
  - Earth banks to isolate wetlands
  - Weir at Wellington
  - Drain non-essential weir pools
- Towns would require significant restrictions
- Restrictions in Adelaide, highly dependent on local inflows



# Drought Management

- MDBC working closely with partner Governments
- Drought Management Plan building on operational plans
- Communications Plan being strengthened

